



DSO ELECTRIC COOPERATIVE, INC.

DSO
ELECTRIC COOPERATIVE

HEADLINER

BOARD OF DIRECTORS

David Mueller Tampa, President	James Christopher Falun, Director
Sheila Hummel Hope, Vice President	Randy Cooper Gypsum, Director
Bruce Spare Assaria, Secretary	Ken Hedberg Marquette, Director
Kenneth Berry Minneapolis, Director	Mike Richards Solomon, Director
David Butler Junction City, Director	

STAFF

Timothy J. Power CEO	Marla Marshall CFO
Tracy Turner Operations Manager	Derrick Rutherford Communications Manager

OFFICE HOURS

8 a.m.-4 p.m., Monday-Friday

PAYMENT LOCATIONS

**CENTRAL NATIONAL BANK IN
WALMART SUPERCENTER**
521 E. Chestnut St., Junction City, KS 66441
FARMERS STATE BANK
447 Harrison, Lindsborg, KS 67456

OUTAGE INFORMATION

**IN CASE OF AN OUTAGE, CALL
800-376-3533.** After-hours calls will be
answered by dispatch and forwarded to
standby personnel.

FIND OUT MORE

facebook.com/DSOElectricCooperative

@DSOElectricCoop

The Power Surge

ARTICLE PROVIDED BY NRECA

Factors driving the rising demand for electricity

Across the U.S., the demand for power is climbing at one of the fastest rates in decades. As the economy becomes more reliant on electricity and data centers continue to sprout up in many parts of the country, electric cooperatives are preparing to meet the challenges that skyrocketing demand brings.

The North American Reliability Corporation — the watchdog for the U.S. electric grid — recently released the 2025-2026 winter reliability assessment, which echoed other recent reports, including longer-term outlooks that expect sufficient energy resources during normal conditions but potential supply shortfalls and outages under more intense weather conditions.

Extreme weather, coupled with other factors driving increased demand, poses challenges for electric utilities, including cooperatives, in their mission to provide reliable power around the clock.

Several key factors are driving increased demand — including economic

growth, expanded manufacturing, data center development and increased electrification in transportation. Together, these trends are reshaping how much electricity we consume and how quickly utilities like DSO must adapt to meet future needs.

One of the biggest drivers of rising demand is increased electrification. More homes and businesses are transitioning to electricity for home heating, water heating and transportation. EVs are becoming more common on the road, and many states are offering incentives to help consumers make the switch. Additionally, electric heat pumps are replacing traditional furnaces in many homes due to their efficiency. These transitions mean greater energy use and increased pressure on our electric grid.

Data centers and the growth of advanced manufacturing are also contributing to higher electricity use. As businesses expand and new industries take root,

Continued on page 12D ►

ENERGY EFFICIENCY TIP OF THE MONTH

Ensure you're making the most of your home heating system. Replace or clean filters to keep your furnace or heat pump running efficiently. Listen for strange noises and check for uneven heating — these signs indicate that the system may need servicing. Ensure vents and radiators aren't blocked by furniture or rugs as proper airflow helps your system work less and saves energy. A little maintenance along the way can prevent costly repairs and keep your home cozy through winter. SOURCE: NRECA



The Arbor House

EVENT LOCALE AND STABLES

BASE PHOTOGRAPHY

Where craftsmanship, community and celebration meet on the Kansas plains

When **JUSTIN AND MARISSA LONG** purchased the property that would become **THE ARBOR HOUSE EVENT LOCALE AND STABLES**, they envisioned more than just a building — they saw an opportunity to meet a growing need in their community. With limited options for weddings and large gatherings in the surrounding area, the couple set out to create a welcoming, well-equipped space where people could celebrate life's milestones close to home.



Thoughtful landscaping further enhances the setting, with large accent rocks sourced from Newton Rock & Mulch and outdoor spaces designed to blend naturally into the surrounding countryside.

Nestled on scenic Kansas acreage northeast of Bennington (located approximately 15 minutes off Interstate 70), The Arbor House has quickly grown into a destination for weddings, celebrations and community events, thoughtfully designed to balance function, beauty and a true country setting.

A RUSTIC-MODERN VENUE BUILT FOR GATHERING

Set against wide-open pastures and mature cottonwood trees, The Arbor House features a rustic-modern design with a spacious, climate-controlled indoor venue that comfortably accommodates up to 175 guests. The flexible layout allows the space to host weddings, company parties, birthday celebrations, reunions, fundraisers, and live music or festival-style events.

One of the venue's defining features is its wall of large glass garage doors that open directly to an expansive patio, seamlessly connecting indoor and outdoor spaces. An additional covered patio offers a natural extension of the venue, ideal for ceremonies, cocktail hours, or live entertainment. Together, these spaces create an open, relaxed atmosphere while maintaining comfort in every season.

To simplify planning, tables, chairs and venue setup are included, allowing couples and hosts to focus on the experience rather than logistics. Despite its generous size, the venue maintains a warm, welcoming feel — a reflection of the intentional design choices throughout.

DESIGNED WITH WEDDINGS IN MIND

Weddings at The Arbor House are carefully planned to offer ease and comfort from the first moments of the day through the final send-off. The groom and his groomsmen have access to a dedicated, climate-controlled Groom's Barn, providing a private and relaxed space to get ready, gather and enjoy the moments leading up to the ceremony.

For the bride and her bridal party, preparation takes place in the on-site Airbnb. Connected to the venue, this space offers ample mirrors, generous seating, natural light, and room to move — creating an ideal environment for hair, makeup and pre-ceremony photos. The Airbnb can also accommodate overnight stays, allowing the bridal party to remain on-site and enjoy a calm, seamless wedding day without travel interruptions.

Couples may choose from indoor or outdoor ceremony options, with scenic countryside views providing a beautiful backdrop in every season.

ROOTED IN CRAFTSMANSHIP AND COMMUNITY

The Arbor House is deeply rooted in both local investment and hands-on craftsmanship. Approximately 80% of the venue's development was made possible through a USDA Rural Economic Development Loan and Grant (REDLG), secured in partnership with DSO Electric. This funding supported rural economic growth while helping transform the property into a much-needed event space for the region.

Adding a personal touch throughout the venue, all custom woodwork was completed by Justin himself. From structural elements to finishing details, the craftsmanship reflects pride, skill and attention to detail — giving the space a distinctive character that guests immediately notice.

ON-SITE LODGING AND COUNTRY LIVING EXPERIENCE

The on-site Airbnb rental isn't just for weddings. The



The Arbor House Event Locale and Stables is a growing destination — thoughtfully built to serve the community while providing a memorable, welcoming setting for those celebrating life's most meaningful moments.

lodging offers a quiet country-living experience ideal for repeat guests or visitors who prefer wide-open spaces over traditional hotel stays.

The property provides ample room for trailers and RVs, along with equine-friendly amenities for guests traveling with horses — a unique feature that reflects the venue's rural roots and versatility.

A VISION FOR THE FUTURE

Looking ahead, Justin and Marissa continue to expand and enhance the property. A dedicated outdoor wedding ceremony site is currently in development, with future plans to incorporate a pond that will add water features, natural beauty, and additional photo opportunities. There is also potential for additional A-frame Airbnb rentals, further extending lodging options for out-of-town guests.

A GROWING DESTINATION FOR LIFE'S MOST MEANINGFUL MOMENTS

Together, the event venue, on-site lodging, wedding-specific amenities, and future enhancements position The Arbor House Event Locale and Stables as a growing destination — thoughtfully built to serve the community while providing a memorable, welcoming setting for those celebrating life's most meaningful moments.



BASE PHOTOGRAPHY



Diligent planning while building the venue, such as the groom's barn (left) and bride's room (far left), make The Arbor House an attractive wedding venue. Additionally, guests can stay at the Airbnb property or bring their trailers and RVs for a unique traveling experience.

The Power Surge

Continued from page 12A ►

the demand for reliable, high-capacity power is increasing. The resurgence of domestic manufacturing has led to major construction of facilities. These facilities often require substantial energy loads, and many operate continuously to keep production lines running. This growth brings jobs and investment, but it also requires solutions for the pressures put on the electric grid.

Population growth and housing development are also contributing to rising demand in some areas, and everyday life is becoming more energy-dependent, too. Smart appliances, connected devices, home offices and entertainment systems are adding to overall consumption, even as efficiency improves.

While increased demand presents new challenges for electric utilities, it also creates significant opportunities for co-ops and the communities they serve, including job growth, steady revenue, downward pressure on residential electric rates, and improved infrastructure. Electric co-ops are responding by planning carefully for the future — investing in grid modernization and offering programs and services to help co-op members conserve energy.

Electricity powers nearly every aspect of today's economy, and its role will only grow stronger. As electrification accelerates, long-term planning becomes more important than ever.

DSO is ready to meet rising demand in our local communities. Through innovation, investment and collaboration, we are preparing for a more reliable and resilient energy future.

Article provided by the National Rural Electric Cooperative Association, the national trade association representing nearly 900 local electric cooperatives. From growing suburbs to remote farming communities, electric co-ops serve as engines of economic development for 42 million Americans across 56% of the nation's landscape.

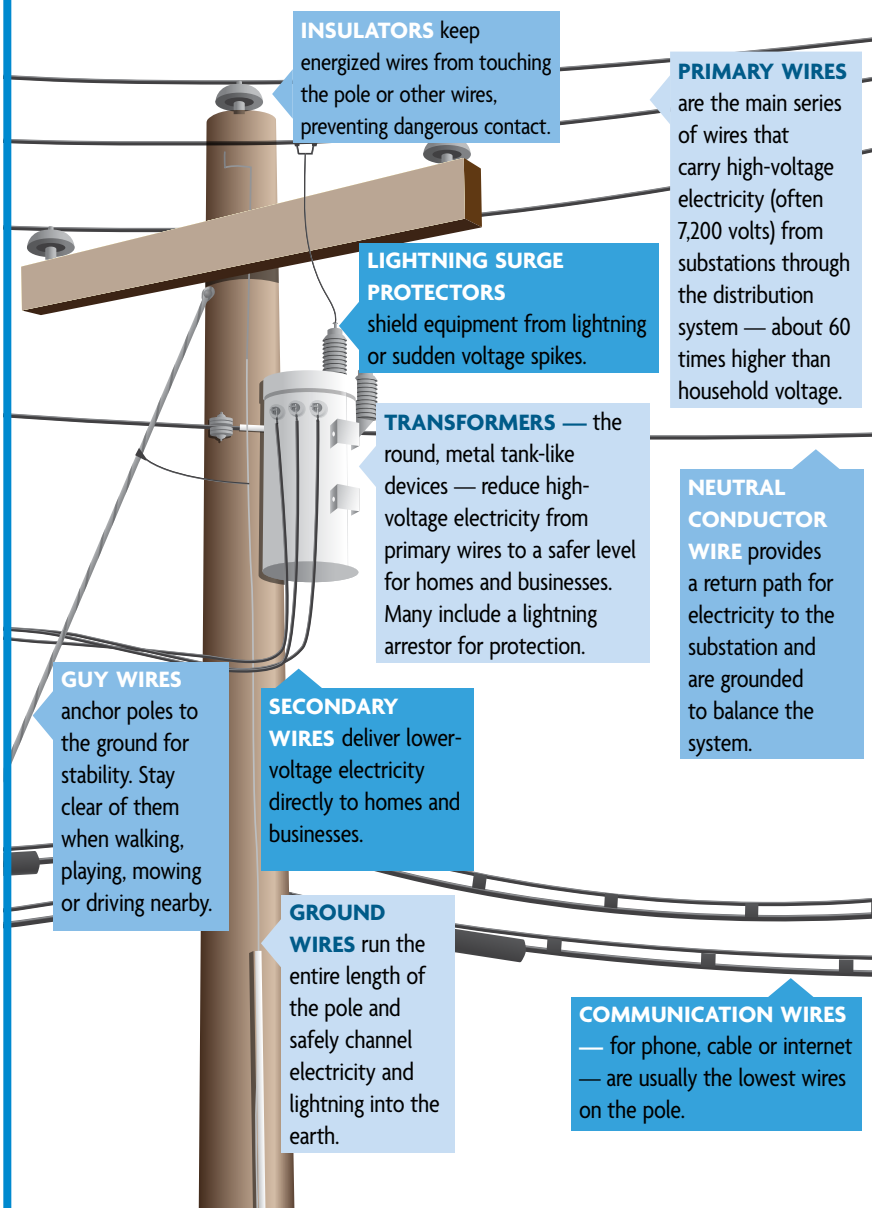
PARTS OF A POWER POLE

Ever wonder what's on a power pole and how it delivers electricity to your home?

Learning about each part can help you and your family stay informed — and safe.

Here are some common parts found on power poles.

Equipment can vary depending on location and service needs.



**NEVER ATTACH POSTERS, SIGNS
OR OTHER ITEMS TO UTILITY POLES.
THESE CREATE SAFETY HAZARDS FOR LINeworkERS.**