



DS&O ELECTRIC COOPERATIVE, INC.

HEADLINER

Board

- | | |
|---|--|
| James Christopher
Falun, President | Dane Clark
Gypsum, Trustee |
| Brian Lang
Solomon, Vice President | Sheila Hummel
Hope, Trustee |
| Ken Hedberg
Marquette, Secretary | David Mueller
Tampa, Trustee |
| Dean Allison
Delphos, Trustee | Ron Seyfert
Ada, Trustee |
| David Butler
Junction City, Trustee | Bruce Spare
Assaria, Trustee |

Staff

- | | |
|---|---|
| Timothy J. Power
CEO | Judy Barten
CFO |
| Mike Olberding
Operations Manager | Derrick Rutherford
Communications Manager |

Office Hours

8 a.m.-4:30 p.m., Monday-Friday
Open over the lunch hour



Payment Locations

- CENTRAL NATIONAL BANK IN WALMART SUPERCENTER**
521 E. Chestnut St., Junction City, KS 66441
- FARMERS STATE BANK**
447 Harrison, Lindsborg, KS 67456

Outage Information

IN CASE OF AN OUTAGE, CALL 800-376-3533. After-hours calls will be answered by dispatch and forwarded to standby personnel.

Find Out More

-  facebook.com/DS&OElectricCooperative
-  @DS&OElectricCoop

FROM THE CFO

Consider a Prepay Account BY JUDY BARTEN, CFO

DS&O receives questions about its prepay electric rate from time to time. To best explain what prepay is and how it works, it is helpful to look at similar services we use in our everyday lives. Many of you have propane tanks at your homes. You pay a certain price to have a truck come by to fill up your propane tank, either on a certain schedule or as needed. Similarly, when you go to the gas station, you pay to put gas into the gas tank. DS&O's prepay electric rate works just the same; you pay to add electricity to your "tank," but in this case, there isn't a physical tank. With prepay you pay prior to your usage, while with a traditional electric rate you pay after your usage.

DS&O began offering a prepay rate to residential members in 2011 and currently has hundreds of such accounts. These members selected the prepay option for a variety of reasons, but one major benefit can be lower electric bills. A few studies across the U.S. have shown electric bills are up to 14% lower for those on a prepay rate versus a standard electric rate, mainly because people pay closer attention to their electricity usage patterns.

Prepay rate plans are popular because of their flexibility. You can pay any amount at any time, as long as you maintain a credit balance on

your account. With a prepay account, if you get low on funds in your account, you will receive a text or email letting you know. If you run out of money in your prepay account, then your power will shut off automatically. To turn it back on, you simply go online or stop by our office and pay for more electricity.

A major plus for enrolling in our prepay rate is there are no credit checks or deposits for new members. In some cases, this can save you from having to come up with hundreds of dollars as a deposit to get service turned on.

Another advantage of our prepay rate plan is, unlike our traditional electric rate plans, you are not subject to late payment or reconnect fees.

For more specifics and to see how prepay stacks up against our traditional residential electric rates, consider the table below.

If you decide you want more payment flexibility and the potential to save more on your electric bill, then prepay may be just the answer. Let us know if you want to make the switch to prepay or have any questions about the program.

	Prepay Rate	Traditional Rates
Deposit	\$0	Varies (can be up to \$600)
Reconnect Fee	\$0	\$50
Billing	No monthly bill; pay as needed	Monthly bill due
Late Fee	\$0	10% of outstanding balance
Availability Charge	\$1.249/day	RURAL \$37.50/mo, URBAN \$25/mo
Energy Rate (annual average)	\$1.244/kWh	RURAL \$0.1180/kWh, URBAN \$0.1342/kWh

Mark Your Calendars

Annual Meeting
Tuesday, April 14, 2020

April 2020

S	M	T	W	U	F	S
			1	2	3	4
5	6	7	8	9	10	11
12	13	14	15	16	17	18
19	20	21	22	23	24	25
26	27	28	29	30		

Being a member of an electrical cooperative means you are also an owner. As a member-owner, you have the ability to make sure the cooperative strives for and continues to operate as a strong and viable organization.

Each member-owner should be continually educated on the issues concerning their local electric utility. You can obtain this education by reading *Kansas Country Living* magazine and attending the DS&O Annual Meeting on Tuesday, April 14, 2020, at 6 p.m. at the Webster Conference Center, 2601 N Ohio, Salina, Kansas.



Four Tips for Winter Safety

It's no surprise that winter months bring the increased potential for fire risks and electrical safety hazards. During the coldest months, individuals are using additional electrical devices and appliances, like space heaters, electric blankets and portable generators along with cooking inside more often.

The National Fire Protection Association estimates 47,700 home fires occur each year in the U.S. due to electrical failure or malfunction. These fires result in 418 deaths, 1,570 injuries and \$1.4 billion in property damage annually. This winter, safeguard your loved ones and your home with these electrical safety tips from the Electrical Safety Foundation International.

1. Don't Overload Outlets.

Overloaded outlets are a major cause of residential fires. Avoid using extension cords or multi-outlet converters for appliance connections — they should be plugged directly into a wall outlet. If you're relying heavily on extension cords in general, you may need additional outlets to address your needs. Contact a qualified electrician to inspect your home and add new outlets.

2. Never Leave Space Heaters Unattended.

If you're using a space heater, turn it off before leaving the room. Make sure heaters are placed at least 3 feet away

from flammable items. It should also be noted space heaters take a toll on your energy bills. Space heaters should be used to warm up small spaces like a bedroom or office. If you're using them throughout your home, it may be time to upgrade your home heating system.

3. Inspect Heating Pads and Electric Blankets.

These items cause nearly 500 fires every year. Electric blankets more than 10 years old create additional risks for a fire hazard. Inspect your electric blankets and heating pads – look for dark, charred or frayed spots, and make sure the electrical cord is not damaged. Do not place any items on top of a heating pad or electric blanket, and never fold them when in use.

4. Use Portable Generators Safely.

Unfortunately, winter storms can cause prolonged power outages, which means many consumers will use portable generators to power their homes. Never connect a standby generator into your home's electrical system. For portable generators, plug appliances directly into the outlet provided on the generator. Start the generator first, before you plug in appliances. Run it in a well-ventilated area outside your home. The carbon monoxide it generates is deadly, so keep it away from your garage, doors, windows and vents.

Energy Efficiency Tip of the Month

Are you using your fireplace efficiently? Remember to turn down the thermostat when burning a fire, and close the damper when a fire is not burning.

Source: energy.gov



Notice of Board of Directors Elections

DS&O Electric Cooperative is seeking candidates for three seats on the DS&O board of directors.

Positions up for election this year (the current director is listed below the district) are:

► **Central District**

BRUCE SPARE

► **West District**

RON SEYFERT

► **East District**

DAVID MUELLER

DS&O's coverage area is divided into three districts. Individuals who wish to run for a director's seat need to be active members of the cooperative and bona fide residents of the district they wish to represent. Information packets for those seeking to be candidates for the board are available at the DS&O office in Solomon. Potential candidates and existing directors up for reelection must submit a completed petition signed by at least 15 members who are residents of the cooperative. Signed



Bruce Spare



Ron Seyfert



David Mueller

petitions must be filed in DS&O's office in Solomon by 4:30 p.m. on Friday, Feb. 7, 2020.

Ballots will include those nominated by petition for the board and will be mailed to all members of the cooperative on or about March 13, 2020, and must be returned by 4:30 p.m. on March 31, 2020. Election results will be announced at the DS&O annual meeting, which will be held **TUESDAY, APRIL 14, 2020**.

Election paperwork and copies of the DS&O bylaws are available at the cooperative office located in Solomon or online at www.dsoelectric.com.

If you have questions, contact Derrick Rutherford at 800-376-3533, email at drutherford@dsoelectric.com or by mail at P.O. Box 286, Solomon, Kansas 67480.

2020 Dates to REMEMBER

► **FEB. 7, 2020**

The completed petition, affirmation of director qualification, photo and brief bio must be filed at the DS&O Solomon office by 4:30 p.m.

► **MARCH 13, 2020**

Director election ballots will be mailed to the members.

► **MARCH 31, 2020**

Ballots must be received at the DS&O Solomon office by 4:30 p.m.

► **APRIL 14, 2020**

Election results will be announced at the DS&O annual meeting.



**FREE
MEAL**

RSVP for DS&O Annual Meeting Dinner

Webster Conference Center | 2601 N Ohio, Salina

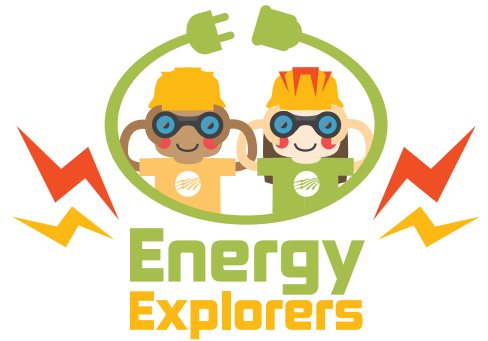
Yes, I/we plan to attend the free dinner and annual meeting on Tuesday, April 14, 2020, at 6 p.m.

_____ of people attending.
(number)

CLIP OUT AND RETURN WITH YOUR NEXT MONTHLY PAYMENT.

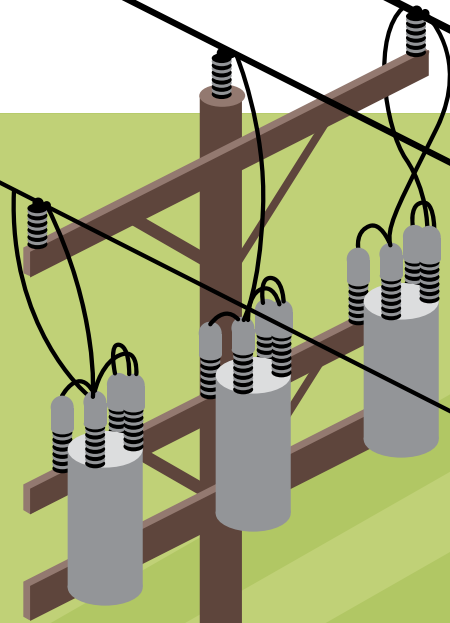
ELECTRICAL EQUIPMENT WORD SCRAMBLE

Electric co-ops use a variety of equipment to make sure you and your family receive reliable electricity. Can you unscramble the equipment terms below?



Use the provided clues for help,
and double check your work in the
answer key below.

- ORNSTAMREFR**
These can look like large metal cans on top of utility poles or big green boxes on the ground. They are used to reduce the voltage of electricity, making it safe for use in your home.
- OERPW NSLIE**
These can hang overhead or be placed underground. They carry electricity from where it's generated to homes and businesses in your community.
- OUTASBSNTI**
This is an electrical facility that contains equipment for controlling the flow of electricity.
- RCTLECIE ERMTE**
These devices are typically found outside the home and measure the amount of electricity you use.
- CBUTKE KTURC**
Lineworkers use these types of vehicles to reach power lines and poles when making repairs and updates to the electrical system.



Answer key: 1. TRANSFORMER 2. POWERLINES 3. SUBSTATION
4. ELECTRIC METER 5. BUCKET TRUCK